

# SwissSalary 365®

100% SwissSalary®, 100% Online, 100% Secure

Have you ever thought about carrying out your payroll accounting on-line? Are you a SME only looking for a payroll software, possibly with an integrated financial accounting? Or do you have a company-wide ERP system and look for a modern, intuitive payroll software?

With SwissSalary 365®, you get a swissdec 4.0 certified software with full functionality of a modern payroll solution: 100% SwissSalary® and 100% on-line.

## Order Today

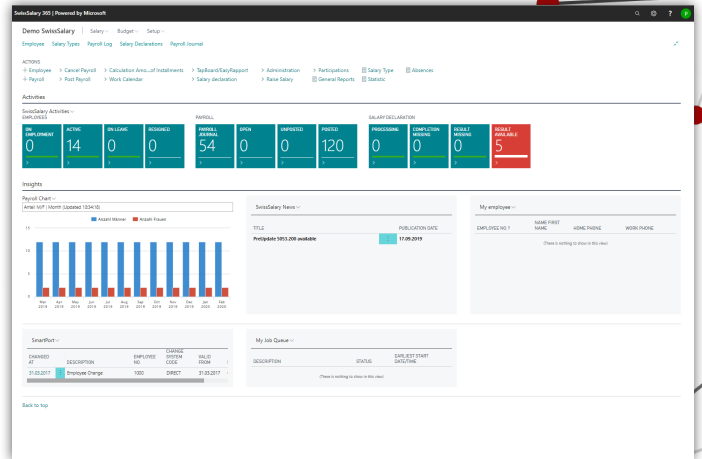
SwissSalary 365® activation is rather simple: After the order, you will receive an email with login details to your new payroll software. Sign in using the link provided and you will get to SwissSalary 365®. Your login and password can be changed at any time.

## Wage Accounting the Very Next Day

A wizard will guide you through master data setup: Enter your company and bank details, workplace, master data for your administration office, UVG and KTG, and you are done. Wage types are already included in the master data, just like the chart of accounts tailored to small and medium companies. Changes to the chart of accounts can be made at any time. After an average time of 30 minutes, your payroll software is ready to go and you can start working.

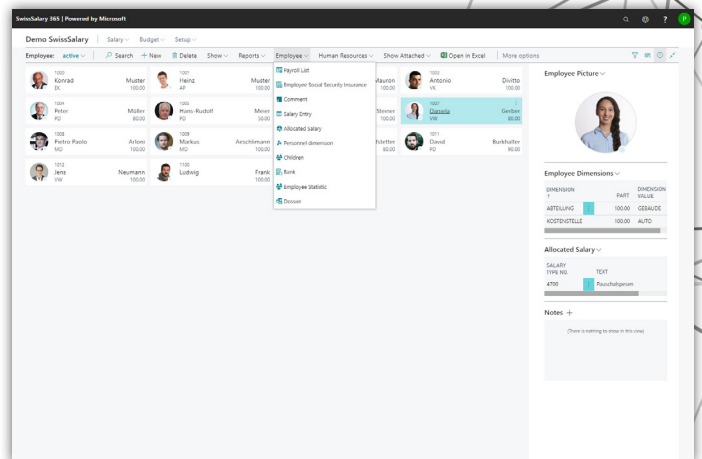
## Security Is Important To Us

SwissSalary 365® is hosted by Microsoft Dynamics 365 Business Central (SaaS). Your data is encrypted using 256-bit encryption. Automatic backups of your data are created daily, so that you can restore a desired backup to an accuracy of a minute. This means that your data is stored in a safe place and always protected against loss.



## SwissSalary 365® Role Center

Intuitive design that helps users focus on the work that is important to them.



## SwissSalary 365® Employee View

Overview of employees with all detailed information.



## Flexible and Device-independent

SwissSalary 365® is accessible via a web interface and can be operated via a smartphone or tablet. Alternatively, you can work in the SwissSalary® app. You can also download a Windows client for desktops and laptops.

## Pay For What You Really Need

Payroll software starting from CHF 69/month: with SwissSalary 365® pricing model, you only pay for what you really need. There is no connection fee. Instead, there is a monthly fee for the package you need: SwissSalary 365® Basic (basic functionality), SwissSalary 365® Plus (advanced functionality and interfaces), SwissSalary 365® + Fibu (with integration into financial accounting). In addition, you pay a flat rate/month per employee invoiced. SwissSalary 365® can be terminated with 3 month's notice.

## Support Is There Only When You Need

SwissSalary 365® is so simple that it can be independently configured in 30 minutes using the supplied wizard and master data. YouTube videos will help you do that. For further information, please contact our professional support available on site in 4 languages (English, German, French, Italian) at any time via email, phone, remote access or in person.

## Office 365 Integration Guaranteed

SwissSalary 365® is seamlessly integrated into the Microsoft Office 365 product range. You can export data to Microsoft Word or Microsoft Excel at any time.

## SwissSalary 365® Interface

Not only does SwissSalary 365® work for small and medium companies. Large companies operating company-wide ERP like SAP, Microsoft Dynamics AX, Sage or Abacus, can also use SwissSalary 365® as a standalone solution. The data is imported in a standardized form via SwissSalary Smart Port or exported using predefined interfaces, and can be read in by any peripheral system.

## SwissSalary Solution Overview

### SwissSalary CloudEssentials®

This app builds on top of the core SwissSalary 365 app by adding new features that can only be made possible using the newest tools from the Business Central platform.

### SwissSalary EasyRapport®

With the help of SwissSalary EasyRapport®, employees register their working hours on cost centers, cost units and/or (sub)projects. They also record expenses and any kind of absences in the office or being outside.

### SwissSalary Direct®

The SwissSalary 365® Self-service portal engages employees and supervisors in payroll processes via an intuitive web interface, while eliminating administrative work from payroll accounting.

### SwissSalary Insights®

With SwissSalary Insights® you get the best possible overview of movements in your company. You can compare and evaluate data more easily than ever before.

