

# SwissSalary NAV®

## Cross-industry Payroll Software for Microsoft Dynamics NAV

For over 15 years now, SwissSalary NAV® has been the cross-industry payroll software for Swiss companies with 10 to over 5,000 employees. Based on the established ERP solution Microsoft Dynamics NAV and with the latest swissdec 4.0 and Certified for Microsoft Dynamics (CfMD) certification, SwissSalary NAV® has the highest possible accreditation Microsoft has to offer.

### More Than 1000 End Customers, Over 90 Partners

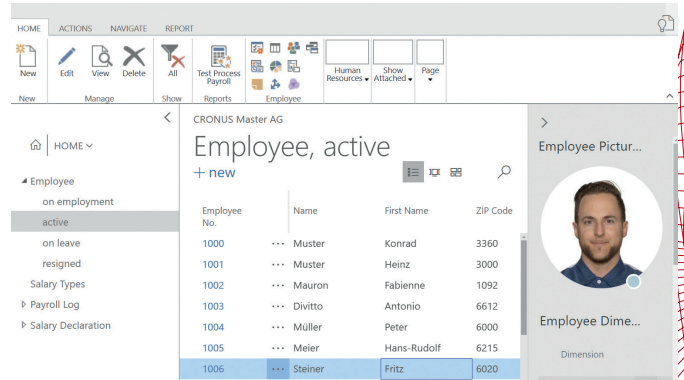
SwissSalary NAV® is available in 4 languages (GE, FR, IT, EN) and, therefore, can be used throughout Switzerland. Long-term project experience and the ideas of more than 1000 of our customers are gathered in the continuous development of the solution. We also work with more than 90 partners in Switzerland and Europe altogether. Dedicated specialists guarantee a comprehensive service starting from the installation and training through to the ongoing support.

### Efficient Staff Management

The clearly arranged personnel master data in SwissSalary NAV® with personal details, payroll data, assignment to social and private insurance, payment details and all relevant accounting and assessment information simplifies employee administration. Entitlements for vacation, holidays and time worked in advance are stored according to your staff regulations, age or years of service. Manual controls are reduced to a minimum. The joining / resignation processes are also fully automated

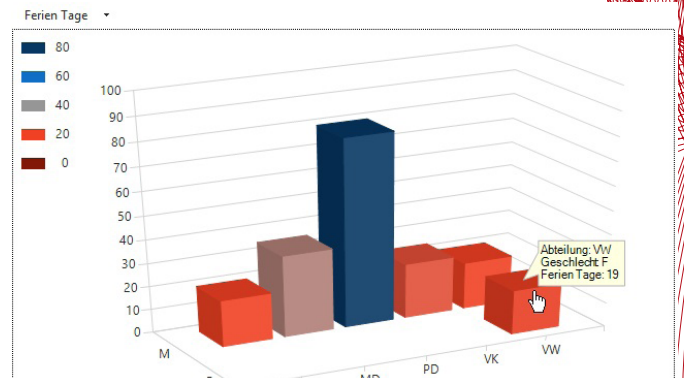
### Powerful Wage Recording

Wage master data tailored to the needs of the Swiss market is available in 6 languages by default. The settings can be adjusted for each client individually or they can be cross-client. You can take care of individual adjustments yourself, as each wage type may be duplicated, merged, disabled or reactivated. The resulting wage types also help avoid time-consuming duplications. Your employees' variable data is recorded on the timeline of the intuitively operated report journal. Of course, assignments to the wage statement or wage structure survey are available as well.



### Clear Personnel Master Data

All information relevant to accounting and assessment is presented in the personnel master data.



### Robust Absence Management

Absence management is one of the aspects made easier to keep track of using charts in SwissSalary NAV®.



## Detailed Working Time Calendar

With SwissSalary NAV®, creating working time calendars for individual employees or groups became possible. The most important features of it are automatic calculation of over- or undertime, its accumulation or direct payout with or without a surcharge and the detailed designation in the payslip. The stored company and annual holidays are automatically sent to be included in the payroll processing. Hourly and daily evaluations round out the range of functions.

## Individual Payslip

The payroll run can be customized at any time. Whether there is an advance pay followed by final pay process or only one single payment per month, you determine the payment cycle. With the assignment of employees to payroll areas, multiple pay processes per month are created simultaneously. The settled pay process can be canceled any time before the posting time or temporarily cached for later processing. The payslip is personalized with supplementary texts or personal information for all or individual employees.

## Comprehensive Reporting

By default, a rich choice of reports and statistics is available in SwissSalary NAV®. Owing to the Microsoft Dynamics NAV filter technology, all the data that you have entered in the system can be additionally assessed in ad-hoc reports or exported to Microsoft Word or Excel for further processing with a push of the button. All the documents created in SwissSalary NAV® are available for printing at any time. Therefore, they do not necessarily have to be archived in paper form.

## Remember: Withholding Tax and ELM Submission

The withholding tax rates of all cantons of Switzerland are available in SwissSalary NAV® by default, and you can update them yourself from the Downloads section on our website. Withholding tax accounting is electronically transmitted via ELM interface to the withholding tax offices across Switzerland. Using ELM, you transfer payroll data to different end recipients like AHV and family compensation offices, SUVA, many health and accident insurance companies, BVG insurers, the Federal Statistical Office and some cantonal tax offices. You can also complete year-end statements with a few mouse clicks.

## A Selection of Our References



## SwissSalary Products Overview

### SwissSalary NAV®

SwissSalary NAV® is a comprehensive, swissdec 4.0 certified payroll software for Swiss companies with 10 to more than 5'000 employees. SwissSalary NAV® fully integrates into Microsoft Dynamics NAV.

### SwissSalary EasyRapport®

As a perfect complement to SwissSalary, EasyRapport is a web-based time-management solution for the recording of working hours, absences, expenses, etc.

### SwissSalary Direct®

The SwissSalary NAV® Self-service portal engages employees and supervisors in payroll processes via an intuitive web interface, while eliminating administrative work from payroll accounting.

